

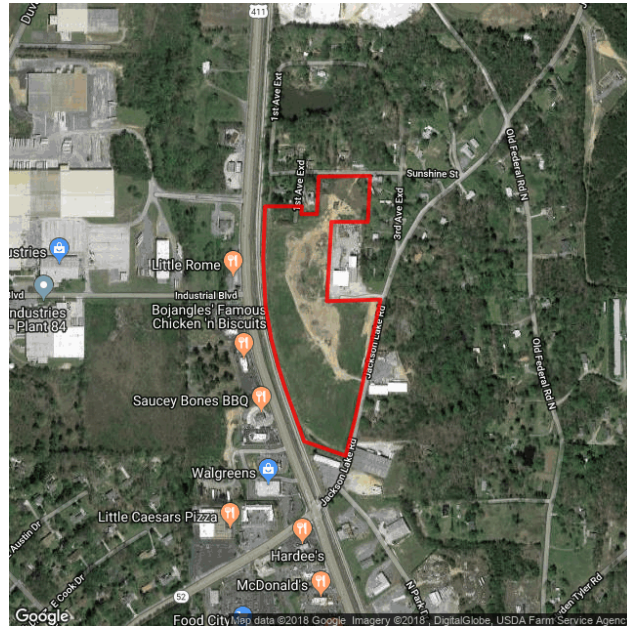
## Keller Property

Chatsworth, GA 30705

Murray County

### Contact

Jim Keller  
 Keller Outdoor  
 190 North Park Drive  
 Chatsworth, GA 30705  
 Phone: 706-695-3562  
 Email: [info@kelleroutdoor.com](mailto:info@kelleroutdoor.com)



### Property

Total Acres	19.3 acres
Remaining Acres	19.3 acres
Largest Tract	11.5 acres
Largest Rail Tract	11.5 acres
GRAD Site	No
Zoning	Commercial
Rail Served	Yes

### Utilities

Water On Site	No
Water Main Size	6 in
Sewer On Site	Yes
Sewer Main Size	8 in
Gas On Site	No
Gas Main Size	4 in
Electric Provider	Georgia Power

### Incentives

Jobs Tax Credit	\$4000/job
Investment Tax Credit	5%
Opportunity Zone	No
Less Developed Census Tract	No

### Transportation

Nearest Interstate	I-75
Distance to Interstate	13 miles
Nearest Port 1	Port of Savannah
Distance to Port 1	279 miles
Nearest Port 2	Port of Charleston
Distance to Port 2	311 miles
Nearest International Airport	Hartsfield-Jackson Atlanta International
Distance to International Airport	82 miles